



Palmers Road, London, E2

BUTLER  STAG





# Stunning two bedroom two bathroom ninth floor apartment set on the Regent's Canal.



- Two Bedroom Ninth Floor Apartment
- Modern and High-Spec Interior
- Close to Victoria Park and Mile End Park
- Furnished
- Canalside Development
- Two Bathrooms
- Mile End Station Nearby
- Available from 29th August 2025

Just moments from the ever-popular Victoria Park and within easy reach of key transport links including Mile End and Bethnal Green stations, the apartment is offered furnished and is available from 29th August.

Finished to a high specification throughout, the internal accommodation comprises of a bright and spacious living area / integrated kitchen, two double bedrooms (one with an en-suite shower room), main bathroom and a large hallway storage cupboard.

Complete with a balcony which has far-reaching views and overlooks Mile End Park, this modern property is the pinnacle of city living.

Secure off-street parking is also available at an additional cost via separate negotiation.

EPC Rating B  
Council Tax Band D



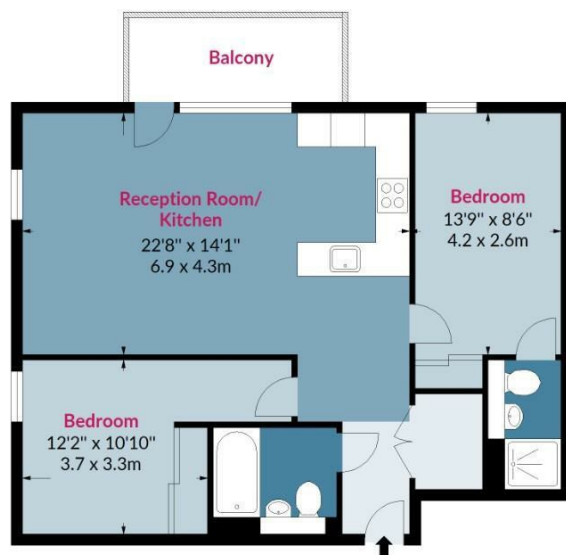




## Titanium Point, E2

Approx. Gross Internal Area 752 Sq Ft - 69.86 Sq M

BUTLER & STAG



### Ninth Floor

Floor Area 752 Sq Ft - 69.86 Sq M

Floor plan is for illustrative purposes only and is not to scale. Every attempt has been made to ensure the accuracy of the floor plan shown, however all measurements, fixtures, fittings and data shown are an approximate interpretation for illustrative purposes only.  
lpaplus.com

IMPORTANT NOTICE - These particulars have been prepared in good faith and they are not intended to constitute part of an offer or contract. We have not performed a structural survey on this property and the services, appliances and specific fittings have not been tested. All photographs, measurements, floor plans and distances referred to are given as a guide and should not be relied upon.

BUTLER & STAG

☎ 020 8102 1236

🏠 508 Roman Road, Bow, London, E3 5LU

✉ bow@butlerandstag.com

www.butlerandstag.uk